

Shift it to the next level.



SuperBrute - a new standard

- Unmatched flexibility - 3 speed motor technology for easy adaptability.
- Highest reliability - patented ED unit for unmatched starting torque.
- Top performance - removable, integrated check valve doesn't inhibit water flow.

Advantages:

- Eliminates the expense of an inline check valve
- Provides flexibility in installations
- Prevents thermo-siphoning
- Allows for minimal system flow
- 3 year warranty



Technical Data:

Flow Range: 0 - 17 U.S. GPM
Head Range: 0 - 19 Feet
Motor: 2 pole, Single Phase
Max. Fluid Temperature Closed System: 230°F (110°C)
Min. Fluid Temperature for UP15: 36°F (2°C)

Minimum Pressure Temp Requirements:

Fluid Temp.	230°F (110°C)	190°F (88°C)	140°F (60°C)
Inlet Pressure	15.6 psi	4.0 psi	1.3 psi

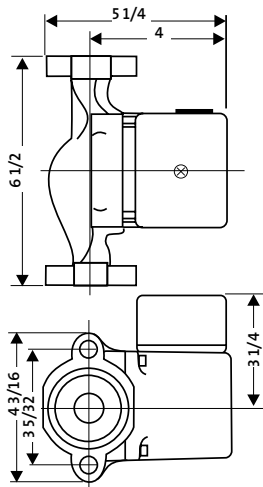
Ambient Air Temp				
90°F (32°C)	130°F (55°C)	140°F (60°C)	160°F (71°C)	175°F (79°C)
Maximum Water Temp				
230°F (110°C)	220°F (104°C)	210°F (99°C)	190°F (88°C)	175°F (79°C)

Product Data:

MODEL	AMPS	WATTS	CAPACITOR
UPS15-58F High (115V)	.75	89	10mF/180V
MED	.66	80	---
1/25 HP LOW	.55	60	---

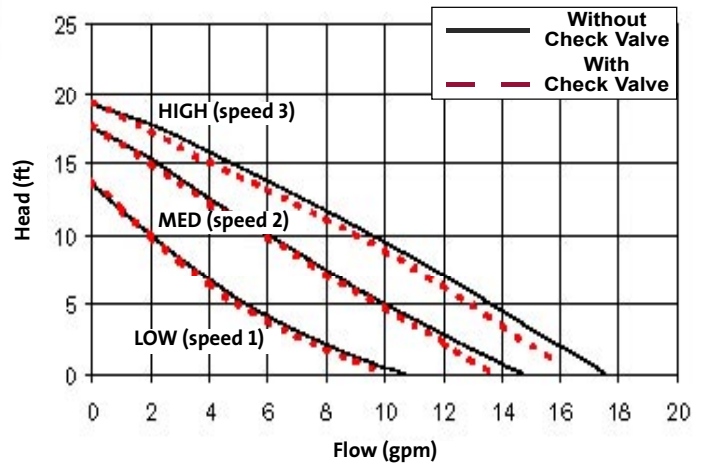
Shipping Connection Types and Sizes:

Flange: (2) 1/2" Dia Bolt Holes
Weight (Lbs.): 7 1/4



Competitive Cross Reference

Grundfos Super Brute	Taco	Bell & Gossett	Armstrong
LOW	0051FC	NRF-9F/LW	
MED	005		
MED	0071FC		
HIGH	0081FC	NRF-33	Astro 30
HIGH	007		
HIGH	008		
HIGH	0010 IFC		



Materials of Construction:

Description	Material
Inlet Cone, Bearing Plate, Bearing Retainers, Rotor Can, Rotor Cladding, Shaft Retainer	304 Stainless Steel
Stator Housing	Aluminum
Shaft, Upper & Lower Radial Bearings	Aluminum Oxide Ceramic
Thrust Bearing	Metal Impregnated Carbon
Check Valve	ACETAL With 302 Stainless Steel Spring & Nitrile Rubber Seats
Pump Housing (Volute)	Cast Iron
O'Ring & Gaskets	EP (Ethylene Propylene Rubber)
Impeller	PES Composite (30% Glass Filled)
Terminal Box	Noryl®

Grundfos Pumps Corporation
17100 W.118th Terrace
Olathe, Kansas 66061
Telephone: (913) 227-3400
Fax: (913) 227-3500

Grundfos Canada, Inc.
2941 Brighton Rd.
Oakville, Ontario L6H 6C9
Telephone: (905) 829-9533
Fax: (905) 829-9512

Bombas Grundfos de Mexico, S.A. de C.V.
Boulevard TLC #15, Parque Industrial Stiva
Aeropuerto
C.P. 66600 Apodaca, N.L. Mexico
Telephone: 52-81-8144-4000
Fax: 52-81-8144-4010

LUPS1027 05/04
PRINTED IN USA