

# Product End-of-Life Information

This document is intended for treatment and recycling facilities and provides information on components, materials, handling, and dismantling of the product when it reaches the end of its life, to facilitate correct and environmentally sound treatment.

Grundfos MI 301 M02 must be disposed of in accordance with local regulations, using authorized WEEE collectors and designated collection points. If these are not available, please contact the nearest Grundfos company or service workshop.

## Safety risks

- Safety risk related to materials used:

The product, being electric equipment, contains materials and substances that may be hazardous and pose risks to the environment if it becomes wasted and is not handled correctly. Please refer to the [EU's SCIP database](#) and the REACH SVHC Content lookup tool via this [link](#) to find the SVHC content present in the product.

- Safety risk related to handling the product:

There is no risk for people during the handling process of the product MI 301 M02.

But the battery should only be removed by following instruction in Quick Guide (QG)/ Instruction and operation (IO) manual to avoid damage or safety hazards

## Disassembly of the product

The product contains a Lithium-ion battery. The battery must be removed and disposed of separately in accordance with local regulations. Do not dispose of the battery with household waste.

At the end of the product's life, the battery must be handled as hazardous waste and processed via approved recycling facilities.

MI 301 M02 modules can all be considered electronic scrap and should be handled as per local regulation.

## The list of required tools to is provided below:

PH0 screwdriver.

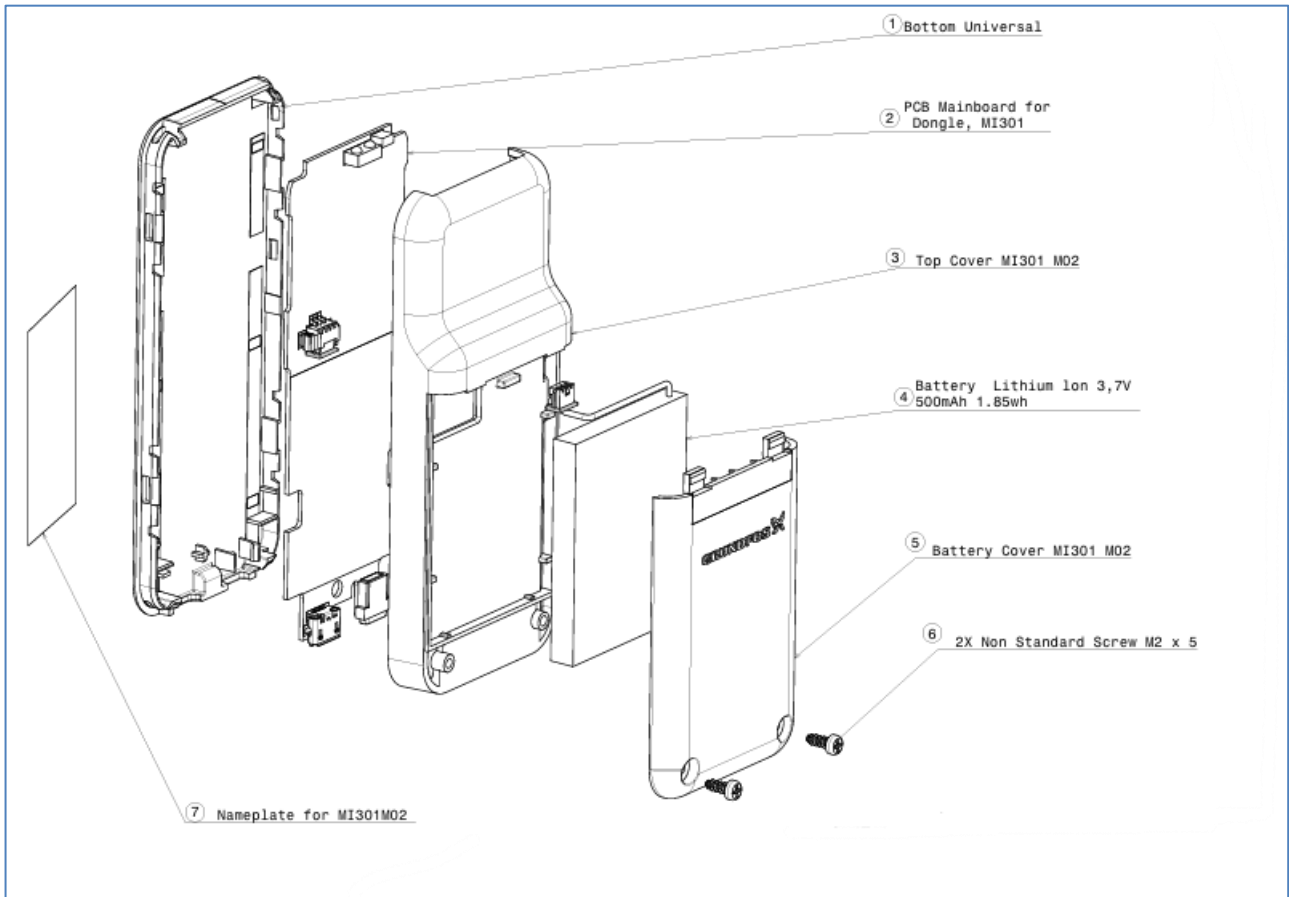
Tweezer (not sharp and pointed).

Follow the below instructions to disassemble MI 301 M02:

1. Remove the two screws from the **Battery cover** to open the MI 301 M02.
2. Carefully remove the Battery assembly using tweezers to detach the connector. Keep the battery assembly aside safely.
3. Proceed with removing the remaining components in the following order:
  - i. Bottom and top covers are tightly coupled to the PCB and are not designed for easy opening.
  - ii. The enclosure must be forcefully opened from the USB port side.
  - iii. Turn the unit bottom cover upside and insert screwdriver in the gap near the USB port area.
  - iv. Gradually push the screwdriver deeper and apply force to pry open the enclosure.
  - v. The enclosure may break during this process; this is acceptable for disassembly purposes.
  - vi. Once broken take out the PCB separately and enclosure plastic material separately with rubber insert on it.
  - vii. Finally, segregate all components for safe disposal: Plastic parts, Polyester nameplate, PCB, Battery

Template title	GF402A0069-02 End-of-Life Information TEMPLATE	Author	GMALBG	Template version	2.0
Template ID (Link)	<a href="#">PROCESSDOC-1525837217-1680</a>	Owner	GMASZEO	Template valid from	07-Apr-2025

Exploded view:



Designation	Component Name	Material	Special disassembly considerations
1	Bottom universal	LEXAN HF1110	Remove rubber separately
2	PCB Mainboard for Dongle, MI301	PCB with electronics	
3	Top Cover MI301 M02	LEXAN HF1110	
4	Battery Lithium Ion 3,7V 500mAh 1.85wh	Lithium	Tweezer to be used to remove the battery assembly connector
5	Battery Cover MI301 M02	LEXAN HF1111	
6	Non-Standard Screw M2 x 5	18-8 stainless steel	Use PH0 screwdriver to remove
7	Nameplate	Polyester	
<b>Additional materials:</b> NA			