

SE/SL Range 56

End-of-Life Information

This document is intended for treatment and recycling facilities and provides information on components, materials, handling, and dismantling of the product when it reaches the end of its life, to facilitate correct and environmentally sound treatment.

Grundfos SE/SL Range 56 (18-63 kW, 24-84 hp) pumps must be disposed of in accordance with local regulations, using authorized WEEE collectors and designated collection points. If these are not available, please contact the nearest Grundfos company or service workshop.

Safety risk

- **Safety risks related to materials used.**

There is no risk to human life, during the disassembly process, posed by the materials used in the product.

- **Safety risks related to the environment.**

SE/SL Range 56 pumps contain motor liquid, type SML-3. This polypropylene glycol (38 %) must be disposed of according to local regulations via public or private waste collection service. The volume of motor liquid varies from 13 to 31 liters (3.4 to 8.2 US gal) depending on SL or SE type.

- **Safety risks related to handling the product.**

Care must be taken:

- To ensure that the pump and the pump parts are washed in the best possible way, before disassembly. If the pump has been pumping liquid which is injurious to health or toxic, it may be classified as a contaminated item and must be handled as such.
- Due to the weight of the pump.

Dismantling the product

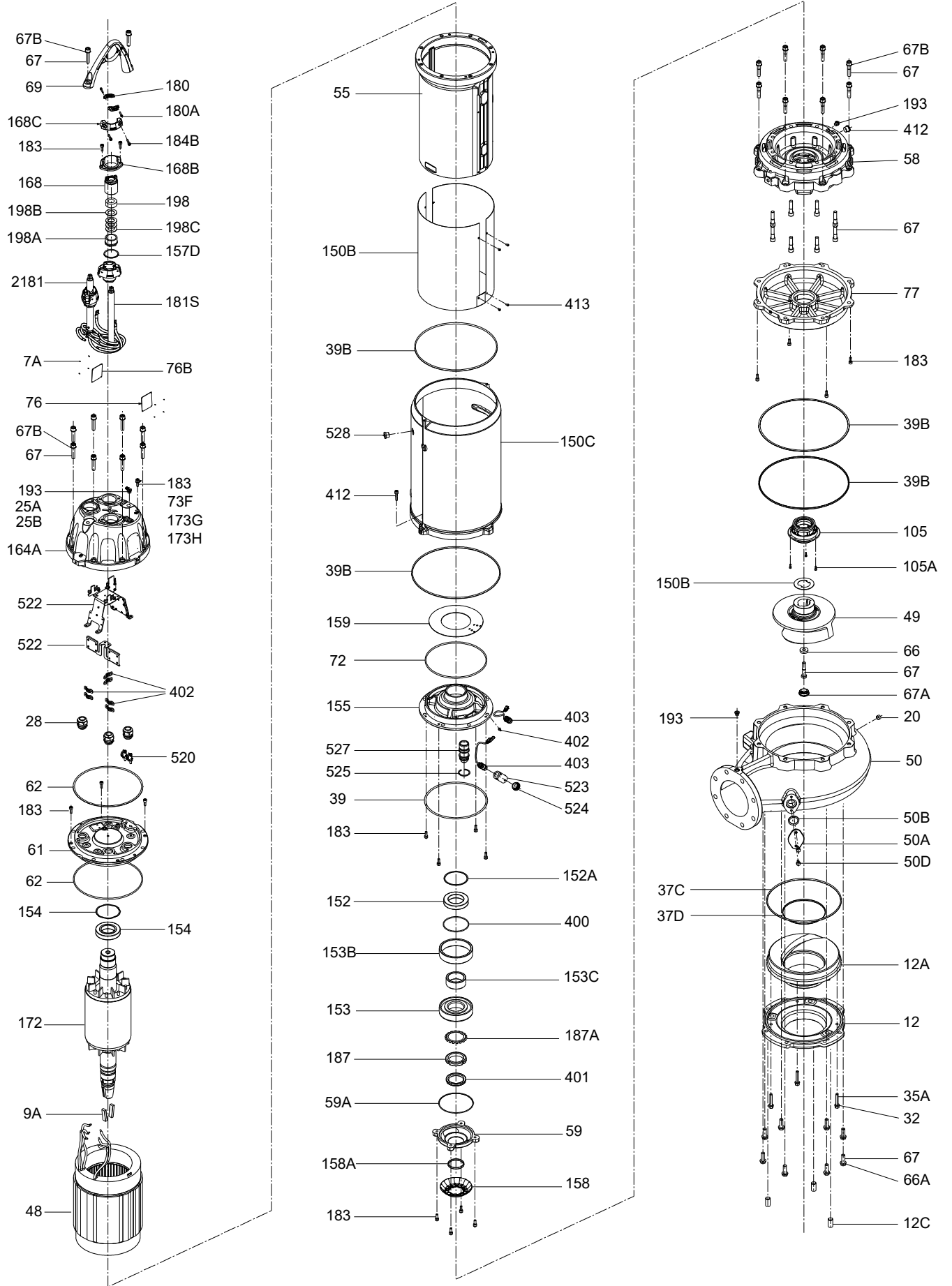
The main materials of the components are:

- Cast iron
- Steel
- Copper / Bronze / Brass
- Aluminium
- Polymers / Composite materials

The materials used can be recycled to a large extent – depending on the national possibilities for recycling. The pump is assembled by using screws and bolts and can be disassembled with standard tools. There are no loose parts inside the motor.

Special disassembly considerations:

1 Stainless steel	
2 Cast iron	
3 Carbon steel/stainless steel	
4 Copper	The rubber outside the copper wires in the cable must be removed from the copper and disposed in an environmentally sound way. The stator is heat-shrink fitted into the stator housing.
5 NBR rubber / polymers	
6 Aluminium	
7 Electronics	



Pos.	Component	Material	Standard
1	M8 × 16 Hexagon socket head cap screw	A4-70	ISO 4762
2	Ferrule 1.5/10	-	-
7A	2.5 × 5 Round Head Rivets	A2	ISO 1051B
9A	Impeller key	ASTM 316Ti	DIN 6885 B
12C	M24 × 45 Set Screw	A4-80	ISO 4026
20	1/2" Plug	DeltaTone/Silico	-
27	Lock washer	D11 × D6.4 × 0.7	-
28	M40 × 1.5 Cable gland	Polyamide/CR	-
32	13 × 24 × 2.5 Flat washer	A4-70	ISO 7089/7090
35A	M12 × 70 Hexagon head screw	A4-80	ISO 4017
37b	*O-ring	NBR 70	ISO 3601-1 Class B
39	*O-ring	NBR 70	ISO 3601-1 Class B
39 A	O-ring	NBR 70	ISO 3601-1 Class B
39b	O-ring	NBR 70	ISO 3601-1 Class B
48	Stator	-	-
49	Impeller	NBR	ISO 3601-1 Class B
50	Pump Housing	ASTM A48	ISO 185
50A	Cover plate for inspection hole	ASTM 316	-
50B	42.2 × 5 O-ring	NBR 70	ISO 3601-1 Class B
50D	M10 × 25 Hexagon head screw	A4-70	ISO 4017
55	Stator housing	ASTM A48	ISO 185
58	Upper seal housing	ASTM A48	ISO 185
59	Bearing cover	ASTM A48	ISO 185
59A	167 × 3 O-ring	NBR 70	ISO 3601-1 Class B
61	Upper bearing bracket	ASTM A48	ISO 185
62	339.3 × 5.7 O-ring	NBR 70	ISO 3601-1 Class B
66	17 × 40 × 5 Washer for impeller	ASTM 316L	-
66a	M16 × 50 Hexagon head screw	A4-80	ISO 4017
67A	Impeller plug	Makrolon 9415 PC-GF 10 FR	-
67B	17 × 26 × 1.2 Serrated Lock washer	A4	DIN 6798 A
67	M16 × 70 Hexagon socket head cap screw	A4-80	ISO 4762
72	299 × 5.7 O-ring	NBR 70	ISO 3601-1 Class B
77	Lower seal housing	ASTM A48	ISO 185
89	M8 × 12 Hexagon socket head cap screw	A2-70	ISO 4762
89 A	Spring lock washer	1.4401	-
93	M6 × 30 Hexagon socket head cap screw	A4-70	ISO 4762
105	Shaft seal cartridge	SiC-SiC	
105A	M6 × 16 Hexagon socket head cap screw	A4-80	ISO 4762
105B	Disc for shaft seal protection	PTFE	-
150 B	*Inner cooling jacket	ASTM A48	-
150 C	*Outer cooling jacket	ASTM A48	-
152	Ball Bearing 6016 2RS1/C3 WT		
152 A	Wave spring 124 × 114 × 0.6 H4.8		
153	Angular contact ball bearing 7316 BECBP		
153 B	*Outer dummy bearing	ASTM A36	-
153 C	*Inner dummy bearing	ASTM A36	-
154	Ball bearing 6214 2RS1/HC5C3 WT		
155	Lower bearing bracket	ASTM A48	ISO 185

Pos.	Component	Material	Standard
157D	65 × 5 O-ring	NBR 70	ISO 3601-1 Class B
158	Centrifugal cup	PA6.6	-
158A	72.39 × 5.33 O-ring	NBR 70	ISO 3601-1 Class B
159	Wire Cover	PTFE	-
164 A	Motor top cover	ASTM A48	ISO 185
168	Upper cable entry	ASTM A48	ISO 185
168 A	Lower cable entry	ASTM A48	ISO 185
168 B	Cable entry clamp	ASTM A48	ISO 185
172	Shaft with rotor	-	-
183	M10 × 25 Hexagon socket head cap screw	A4-80	ISO 4762
187	M80 Lock Nut	-	-
190	Lifting Handle	ASTM 316	-
193	ISO 228-G 3/8" Plug	ASTM 316	-
198	Seal ring*	KTT CR601	-
198	Rubber seal*	KTT CR601	-
198b	*x56x2 Washer	A4	-
198c	*x56x* Disc spring	A4	ISO 16983
230B	lock washer	A4-70	DIN 6798 A
400	126 × 3.53 O-ring	NBR 70	ISO 3601-1 Class B
401	Seal ring	KTT CR601	-
402	M10 × 1 Grease nipple	Carbon steel Zinc plated	DIN 71412 A
403	Float switch	-	-
405	8.4 × 16 × 1.6 Washer	Brass	DIN 125 A
406	M8 Nut	Brass	ISO 4032
407	Cable terminal 16-8	-	-
410	M10 × 16 Set screw (plug)	PTFE	ISO 4026
411	M16 × 16 Set screw	PTFE	ISO 4026
412	ISO 228-G 3/4" Plug	AISI 316	-
413	M6 × 10 Hex Socket Button Head Cap Screw	A4-80	ISO 4762
520	Moisture switch	-	-
520a	M3 × 10 Slotted cheese head screw	4.8 (zinc plated)	ISO 1207
522*	Bracket for wire termination	ASTM A36	-
522*	Bracket screen sermination	ASTM A36	-
528	M10 × 40 Hexagon Socket Head Cap Screw	-	-
1084	M3 × 12 Hexagon Socket Head Cap Screw	A2	ISO 4762
1129	10.5 × 20 × 2 Washer	A4	ISO 7089/7090
1173	17 × 23 Seal washer	Cu	-

* depends on pump version