

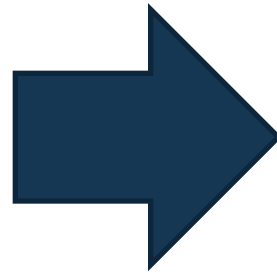
The new generation of Grundfos CR pumps

MOVING THE LIMITS

FPV Variants available



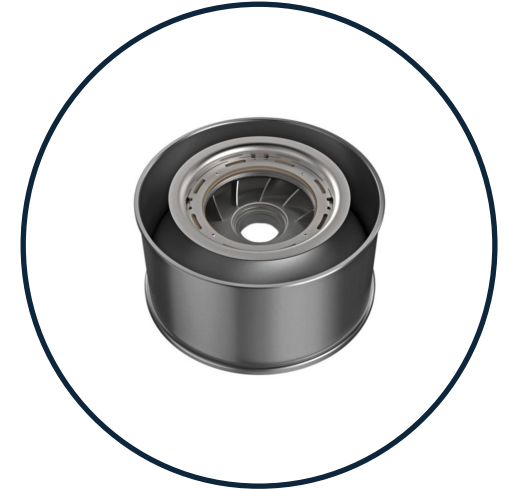
FPV Variants for CRXL



Motors



Pump Modules



Shaft Seals



Connections



FPV Variants for CRXL - Motors

Motors



4 Pole Motor

- Lesser noise
- Lesser beating of liquid

Special voltages / Ex-Proof

- Voltages to meet any grid requirement
- ATEX approved motor

Multiplug

- Models up to 7.5kW
- Ease of installation (Plug and pump)

Different kW sizes

- Oversized motors
- Undersized motors

E- Motor*

- Energy savings
- Integrated controls

Anti condensation heater

- To remove moisture in motor
- Recommended in humid pumping condition

Terminal Box Position

- Can be positioned to site requirements

Enclosure Class

- Standard = IP55
- Up to IP66 is available

FPV Variants for CRXL – Shaft Seals

Shaft Seals



Shaft Seal materials*

- Different materials for different pumped liquid

Air Cooled Top

- Water based: up to 180°C
- Thermal oil: up to 240°C
- Up to 55kW models for CR95-155 only

B2B Shaft Seal*

- Abrasive / aggressive / toxic liquid
- E.g.
- Paint / petrochemical industries
- Up to 55kW models for CR95-155 only

Tandem Shaft seal

- Crystallizing / hardening / Sticky liquids
- E.g. Liquids containing NaOH / Ca(OH)₂
- Pharmaceutical industries
- Up to 55kW models for CR95-155 only

* Please contact your local Grundfos representative for more information

FPV Variants for CRXL – Pump Modules

-40 Degrees liquid

- Standard CRXL (in HQQE) can handle this

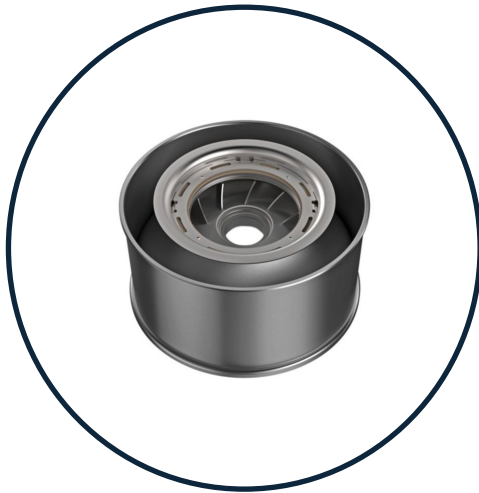
Horizontal installation

- Used in space constraint areas

Bearing Flange

- Increase pump life + ensure reliable operation

Pump Modules



Carbon Free Pumps

- Pumping of pure water
e.g. Electronics Industries

All Stainless Steel






- For use in corrosive environment
- For marine / very humid environments

Ligtec

- Dry run protection
- Overheat protection

Material variants – “All Stainless Steel”

Material variants

PART	 Impeller/ chamber	 Pump head	 Base	 Base plate	 Flanges
CR	○	○	○	○	○
CRN	●	●	●	○	○
CRN (H-version*)	●	●	●	●	●

○ Stainless steel EN 1.4301 ● Stainless steel EN 1.4401 ○ Ductile cast iron EN-GJS-500-7 ● Cast stainless steel EN 1.4408

* For corrosive environment

FPV Variants for CRXL – Connections

Connections



Connections

PART	 DIN/EN, ANSI, JIS	 PJE	 Collar
CR	▲		
CRN	▲	▲	▲