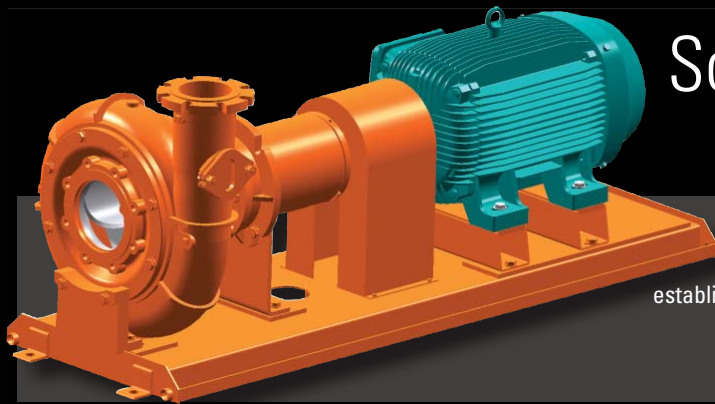




Dry Pit Solids Handling Pumps



A Time-Tested Leader
Chicago Pump Dry Pit Solids Handling Pumps have an established reputation of efficiency, long life and reliable operation

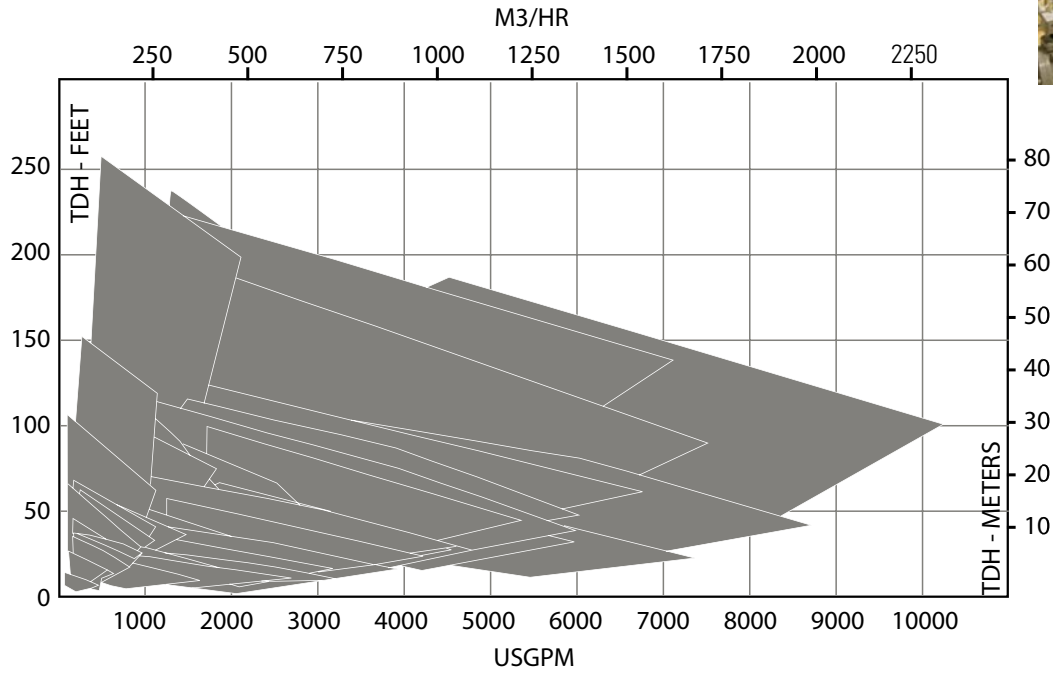
First in: Quality ✓ **Reliability** ✓ **Innovation** ✓

GRUNDFOS 

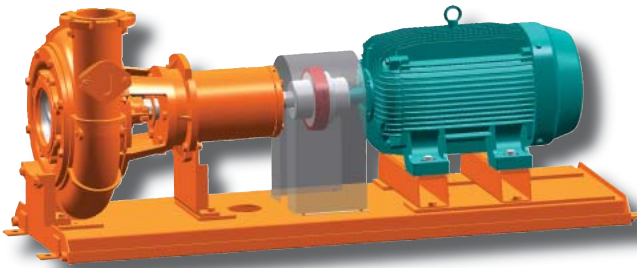


Series 2111

Dry Pit Solids-Handling Pumps



- Capacities to 10,000 GPM (2,271 m³/h)
- Heads to 240 ft. (73m)
- Temperatures to 150° F (66° C)
- Pressures to 150 PSI (1,034 kPa)
- Discharge sizes from 4" (102mm) to 12" (305mm)
- Solids (sphere size) from 3" (64mm) to 5" (127mm)



HBB
Horizontal Base Mounted



VPM
Vertical Pedestal Mounted



VOS
Vertical Open Shaft

Standard Features

Engineered for long service life and low maintenance

Micrometer axial shaft adjustment for easy adjustment to maintain clearance and reduce wear due to circulation between the impeller eye and suction plate

Large diameter, high strength alloy steel shaft to provide maximum stiffness; prevents vibration and fatigue due to unusual operating conditions

Complete rotating assembly can easily be removed without disturbing the pump suction or discharge piping

Stainless steel shaft sleeve to protect the machined and polished alloy steel shaft; stainless steel shaft material optional

Contoured handhole inspection cover in casing

Rugged thick-walled reversible casings provide for clockwise or counter-clockwise rotation using CW or CCW impeller; discharge nozzle may be positioned on 45° increments

Suction and backplate are separate components

Enclosed multi-vane **solids-handling impeller; high efficiency designs reduce operating costs**

Double-row ball thrust bearing

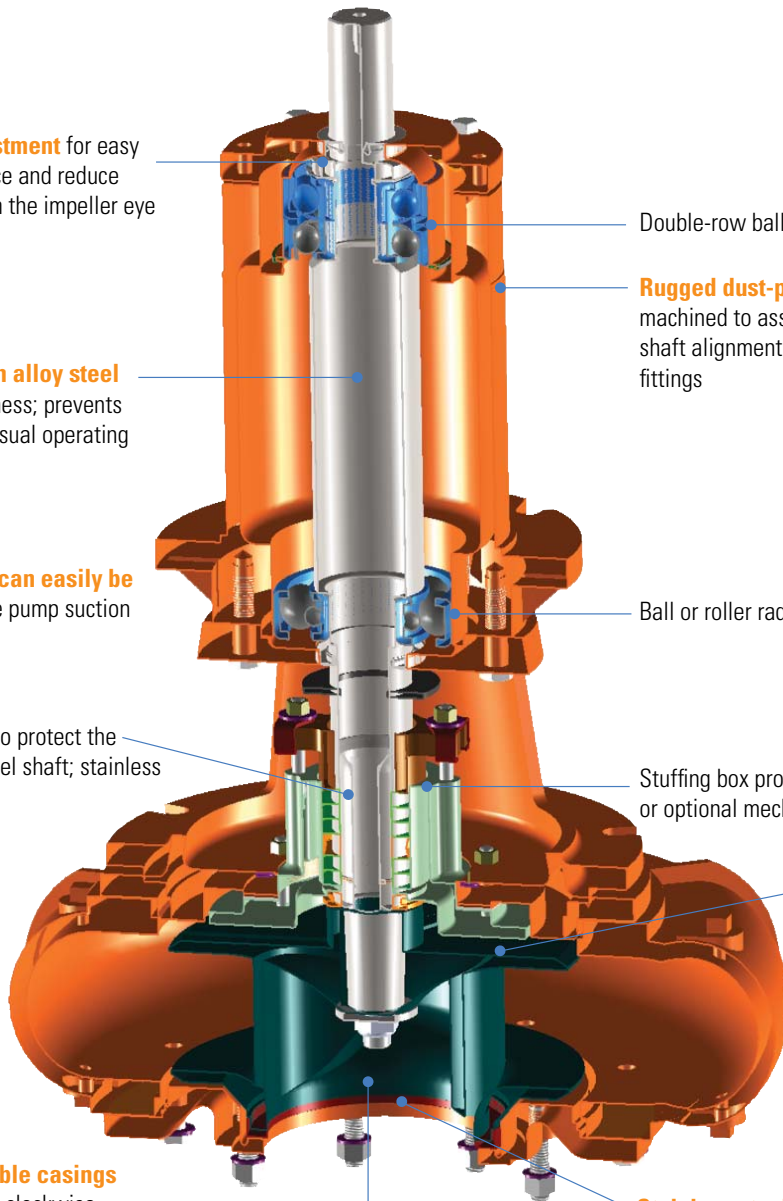
Rugged dust-proof bearing frame machined to assure positive, accurate shaft alignment; provided with lubrication fittings

Ball or roller radial bearing

Stuffing box provided with packing or optional mechanical seal

Back pump-out vanes minimize end-thrust, reduce pressure on the stuffing box and prevent clogging

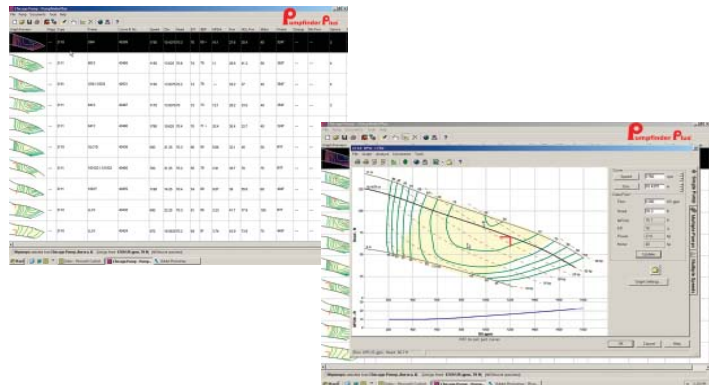
Stainless steel wear rings optional for both the impeller and suction cover



Features may vary depending upon series, model and bearing frame



Chicago Pump provides the latest in free, user-friendly pump selection and sizing software for all of our pump types and configurations; with easy online web access and supporting documents, including specifications, installation drawings, product information and sales brochures. The program facilitates easy submission of quotation and engineering support requests to our staff of experienced application engineers.



Chicago Pump
3905 Enterprise Court
Aurora, IL 60504
630-236-5700
www.chicagopump.com



ISO 9001:2000 Quality System

Bulletin CP 2111-04-09