

# ワンページ選定 in GPC

概要およびクイックガイド

**GRUNDFOS** 

Possibility in every drop

# ワンページ選定に移動

Link: <https://jp/product-selection.grundfos.com/>



選定基準: 「ポンプファミリー」

->

ポンプファミリーを選択: "CR, CRE, CRI, CRIE..."

選択: 「ワンページ選定」

->

押下: 「>」

Grundfos Product Center | Sizing x +

product-selectionsand01.grundfos.com

## Size your product

Find the right pump for your Installation requirements.

Size by: Pump family

Select pump family: CR, CRE, CRI, CRIE, CRN, CRNE, CRT, CR

Select product group: All

Sizing  All suitable  One page sizing

>

# スマートポンプ選定ツールの概要



パラメータを選択

Select parameters

Pumped liquid: Water

Liquid temperature during operation\*: 20

Optimized O&H Selection:

Do not allow oversize motor:

Flow (Q)\*: 7 m<sup>3</sup>/h

Head (H)\*: 150 m

Evaluation criterion: [dropdown]

Low NPSH: [dropdown]

Pump type: [dropdown]

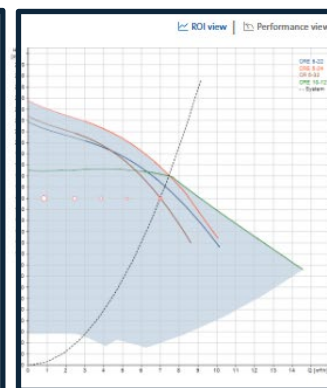
Pump size: [dropdown]

Poles:  2  None

Phase: [dropdown]

U: [dropdown]

Use the duty curves to find a valid sizing input



曲線表示  
(新機能)

オプションのパラメータを追加

Optional sizing parameters

Load profile: Pressure Boosting

Period:  Day  Year

Operation hours per day\*: 9 h/day

Control mode: Const. pressure

Duty point	Flow	Q	H	Hours
1	12.0 %	0.8 m <sup>3</sup> /h	150.0 m	4.1 h/day
2	35.0 %	2.4 m <sup>3</sup> /h	150.0 m	2.5 h/day
3	55.0 %	3.9 m <sup>3</sup> /h	150.0 m	1.2 h/day
4	75.0 %	5.2 m <sup>3</sup> /h	150.0 m	0.8 h/day
5	100.0 %	7.0 m <sup>3</sup> /h	150.0 m	0.4 h/day

Energy price\*: 0.15 EUR/kWh

選定候補一覧  
(新機能)

Criteria	Product name	P2 [kW]	Energy [kWh/year]	Life cycle cost [EUR/10 years]	Price index	Pump + motor length [mm]	Speed in c
<input type="checkbox"/> Lowest LCC	<a href="#">CRE 5-22</a>	5.5	7634	19132	189	1240	
<input type="checkbox"/> Lowest energy	<a href="#">CRE 5-24</a>	5.5	7482	19216	197	1294	
<input type="checkbox"/> Lowest price	<a href="#">CRE 5-32</a>	5.5	11179	20827	100	1536	
<input type="checkbox"/> Most compact	<a href="#">CRE 10-17</a>	5.5	9439	22980	217	1065	

# 選定をよりシンプルに



## Select parameters

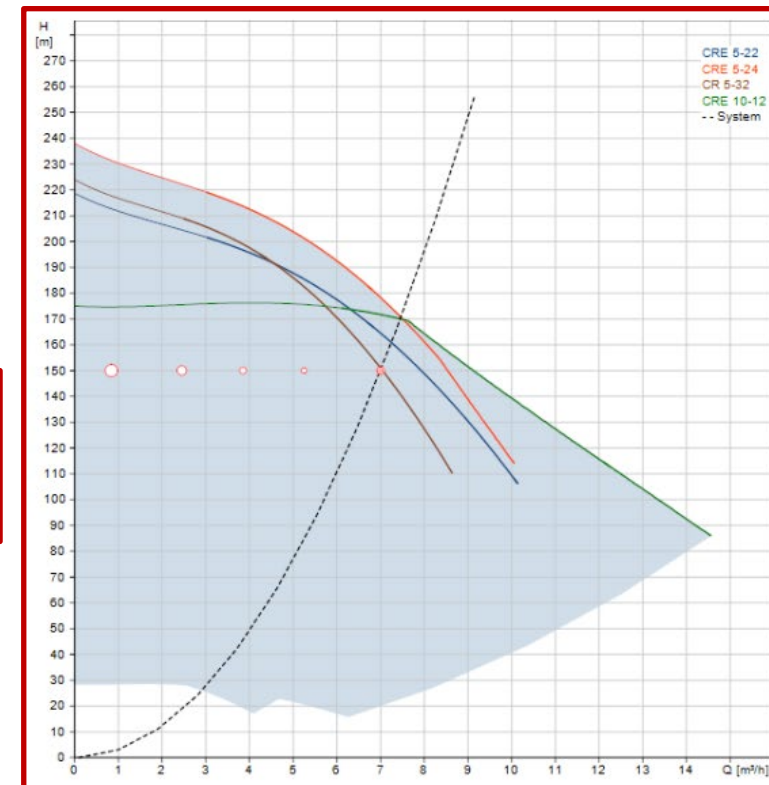
Pumped liquid

Liquid temperature during operation \*

Flow (Q) \*

Head (H) \*

[ROI view](#) | [Performance view](#)



① 仕様点を入力

② 性能曲線を確認

③ 候補を比較選定

Criteria	Product name	P2 [kW]	Energy [kWh/year]	Life cycle cost [EUR/10 years]	Price index	Pump + motor length [mm]	Speed in d
Lowest LCC	<a href="#">CRE 5-22</a>	5.5	7636	19135	189	1240	
Lowest energy	<a href="#">CRE 5-24</a>	5.5	7484	19217	197	1294	
Lowest price	<a href="#">CR 5-32</a>	5.5	10411	19674	100	1536	
Most compact	<a href="#">CRE 10-12</a>	5.5	9442	22986	217	1065	

全てを1ページで確認